

DELTA DENTAL INDIVIDUAL AND FAMILY™

Popular Plans



Adults with dental coverage are **50% more likely to visit the dentist at least once a year.**³

Our popular plans feature:

- Affordable monthly premiums starting at under \$20¹
- Free Until Three™ - No charge for kids under age 3²
- Up to \$2,000 annual maximum

Coverage Options:

Annual Maximum⁴ Per person, per benefit year
Deductible^{4, 5} Per person, per benefit year
Covered Dental Services⁶
Type 1: Preventive Services Exams • Cleanings • Fluoride treatment Space maintainers ⁷ • Sealants
Type 2: Basic Services Bitewing X-rays • Full-mouth/panoramic X-rays Periodontal maintenance • Simple extractions ⁷ Composite/tooth-colored and amalgam fillings ⁷
Type 3A: Major Services – 6-month waiting period⁸ Gum disease treatment • Root canals Surgical extractions • General anesthesia Denture relines, rebases and adjustments Repairs to crowns, dentures and bridges
Type 3B: Major Services – 9-month waiting period⁸ Implants • Crowns • Complete and partial dentures • Bridges

Delta Dental PPO™

	Mesquite Plan-762	Saguaro Plan-763	Agave Plan-764	Cholla Plan-765
Annual Maximum	\$2000	\$1500	\$1000	Unlimited
Deductible	\$50	\$50	\$50	\$25
Covered Dental Services	You Pay	You Pay	You Pay	You Pay
Type 1: Preventive Services	0%	0%	10%	0% ⁷
Type 2: Basic Services	20%	40%	60%	50% ⁷
Type 3A: Major Services – 6-month waiting period ⁸	50%	60%	70%	Not Covered
Type 3B: Major Services – 9-month waiting period ⁸	50%	60%	70%	Not Covered

Great for seniors!

Great for families!

FAQs

Why are the popular plans good for those with prior coverage?

If you have prior PPO/Indemnity coverage, waiting periods may be waived on the Mesquite, Saguaro, Agave and Cholla plans. This allows you full access to covered benefits from day one.⁸

How much do these dental plans cost?

It depends on the plan you choose. We have plans as low as \$19.94 per person/month.²

What is Free Until Three™?

Because good oral health starts at infancy, our plans encourage parents to get regular checkups for their kids with the Free Until Three™ feature. Simply put, there is no charge to cover dependents under the age of 3.¹

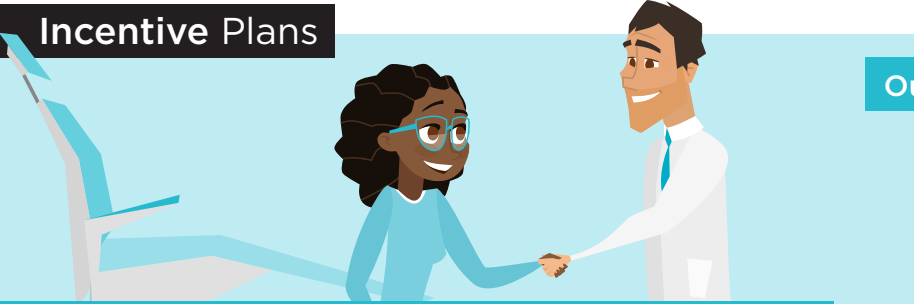
Where do I get more information?

To learn more about plan specifics or to enroll, call 800.894.2701 or visit smilepoweraz.com.

¹As of 8/20/2021, pricing for the Cholla Plan-765 is \$19.94 per member/month. Rates are subject to change and vary by plan. ²Primary subscriber must be 18+ to enroll an eligible dependent via the Free Until Three™ feature. See plan booklet for more info. ³2014 Delta Dental Oral Health & Well-being Survey. ⁴Deductible and annual maximum benefit amounts represent a combination of all networks and are not cumulative. ⁵Deductible applies to all services. ⁶This dental plan reimburses all procedures based on the Delta Dental PPO fee. Premier and out-of-network dentists may bill you for charges above the allowed Delta Dental PPO fee. As a result, you may incur higher out-of-pocket costs when seeing a Premier or out-of-network dentist. ⁷Space maintainers, simple extractions and fillings are not covered services on the Cholla Plan. ⁸Waiting period may be waived if covered under a prior PPO/Indemnity plan with no more than a 63-day gap in coverage. The granting of a waiver is in the sole discretion of DDAZ.

DELTA DENTAL INDIVIDUAL AND FAMILY™

Incentive Plans



Our incentive plans feature:

- No waiting periods
- Free Until Three™ - No charge for kids under age 3⁹
- Up to \$2,000 annual maximum

Adults who report good oral health are almost 2x as likely to report good or better overall well-being.¹⁰

Delta Dental PPO™

Coverage Options:

Annual Maximum¹¹
Per person, per benefit year

Deductible^{11, 12}
Per person, per benefit year

Covered Dental Services¹³

Type 1: Preventive Services

Exams • Cleanings • Fluoride treatment
Space maintainers • Sealants

Type 2: Basic Services

Bitewing X-rays • Full-mouth/panoramic X-rays
Periodontal maintenance • Simple extractions
Composite/tooth-colored and amalgam fillings

Type 3A: Major Services

Gum disease treatment • Root canals
Surgical extractions • General anesthesia
Denture relines, rebases and adjustments
Repairs to crowns, dentures and bridges

Type 3B: Major Services

Implants • Crowns • Complete and partial dentures • Bridges

Copper Plan-766

Year One	Year Two	Year Three
\$1500	\$1750	\$2000
\$50	\$50	\$50

You Pay

0%	0%	0%
60%	40%	20%
70%	60%	50%
70%	60%	50%

Turquoise Plan-767

Year One	Year Two	Year Three
\$1000	\$1250	\$1500
\$50	\$50	\$50

You Pay

20%	10%	0%
70%	60%	50%
70%	60%	50%
70%	60%	50%

NO WAITING PERIODS!

Great for seniors, young professionals and families!

FAQs

What is unique about the incentive plans?

The Copper and Turquoise plans reward members for maintaining dental coverage. The amount you pay for covered services decreases for the first three years you are enrolled in the plan.

How much do these dental plans cost?

It depends on the plan you choose. We have plans as low as \$19.94 per person/month.¹⁴

What is Free Until Three™?

Because good oral health starts at infancy, our plans encourage parents to get regular checkups for their kids with the Free Until Three™ feature. Simply put, there is no charge to cover dependents under the age of 3.⁹

Where do I get more information?

To learn more about plans specifics or to enroll, call 800.894.2701 or visit smilepoweraz.com.

⁹Primary subscriber must be 18+ to enroll an eligible dependent via the Free Until Three™ feature. See plan booklet for more info. ¹⁰2014 Delta Dental Oral Health & Well-being Survey. ¹¹Deductible and annual maximum benefit amounts represent a combination of all networks and are not cumulative. ¹²Deductible applies to all services. ¹³This dental plan reimburses all procedures based on the Delta Dental PPO fee. Premier and out-of-network dentists may bill you for charges above the allowed Delta Dental PPO fee. As a result, you may incur higher out-of-pocket costs when seeing a Premier or out-of-network dentist. ¹⁴As of 8/20/2021, pricing for the Cholla Plan-765 is \$19.94 per member/month. Rates are subject to change and vary by plan.